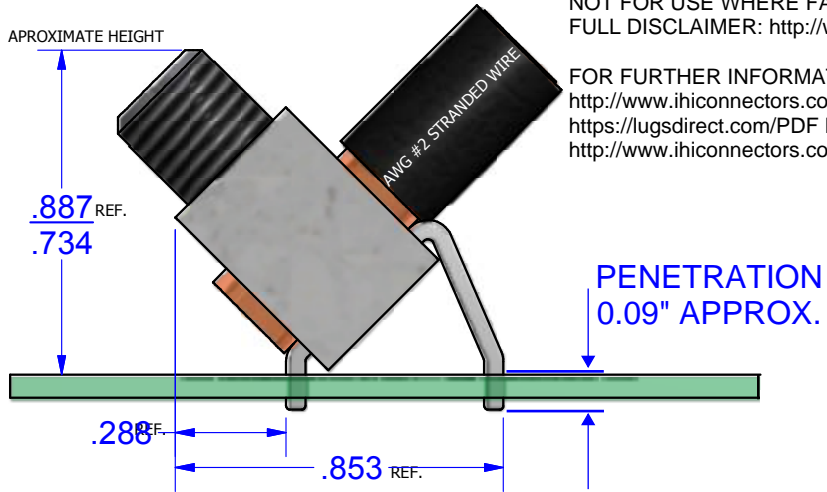
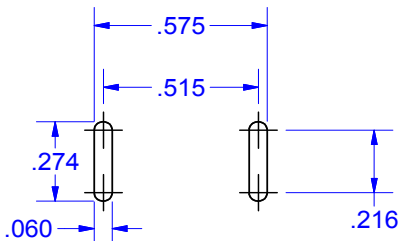
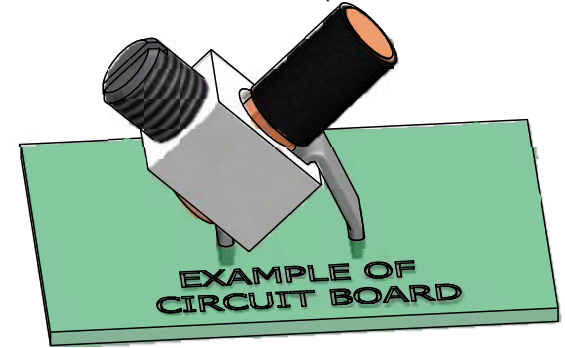


NOT FOR USE WHERE FAILURE CREATES A HAZARD TO HUMAN HEALTH OR SAFETY. ALL PRODUCTS ARE SUBJECT TO THIS FULL DISCLAIMER: <http://www.ihconnectors.com/disclaimer.html>

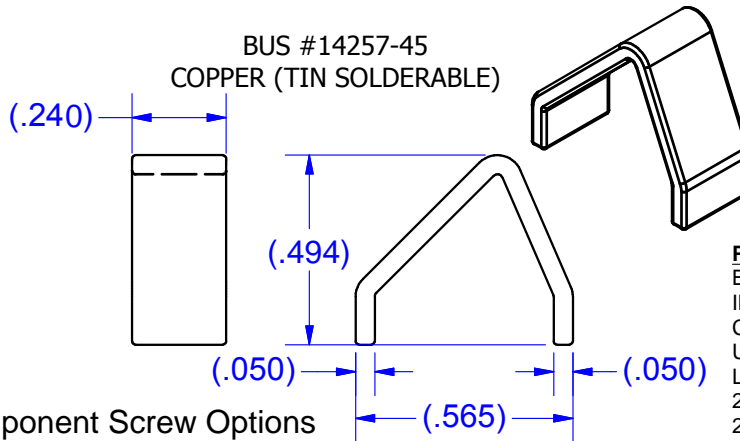
FOR FURTHER INFORMATION ON THE PROPER USE OF THIS PRODUCT IN SPECIFIC APPLICATIONS SEE http://www.ihconnectors.com/High_Amp_Wide_Trace_PCB_Wire_Connection.html
<https://lugsdirect.com/PDF Documents/5-16-SLOTTEDSCREW-BIT-RECOMMENDED-SPECS-IHCONNECTORS.pdf>
<http://www.ihconnectors.com/Technical-Data-Installation.htm>



CONDITIONS OF ACCEPTABILITY ARE NOMINALLY PROVIDED BY THE TURN PREVENT STAPLES OF MINIMUM REQUIRED CROSS SECTION IN CONJUNCTION WITH ADEQUATE PCB STRUCTURE.



EXAMPLE OF CIRCUIT BOARD

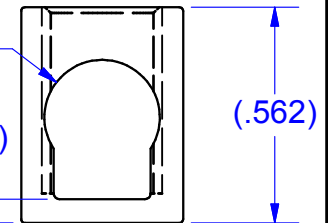
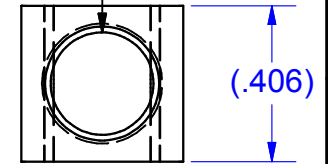


EXTRUSION CAVITY ID MARKS WHEN USED FOLLOW THIS TYPICAL PATTERN ON THE TOP OF THE PART

5/16-24 UNF - 2B

PARTS MARKED

- B2
- IHI LOGO
- CSA LOGO
- UL RECOGNITION LOGO
- 2-14CU7
- 2-8AL7



Component Screw Options

SCREW #12786SS
STAINLESS STEEL
INSERTED TO BOTTOM
OF WIRE HOLE

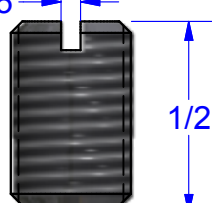
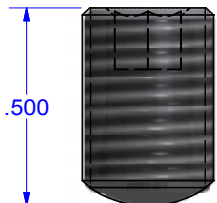
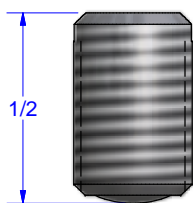
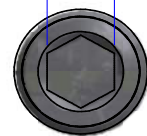
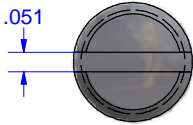
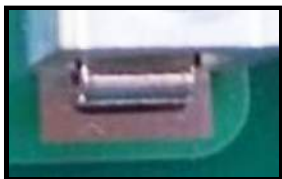
Screw #12786-HEX
Steel (Zinc Plated)
4mm 5/32

SCREW # 12786/15718/15720
Steel (Zinc Plated)
INSERTED TO BOTTOM
OF WIRE HOLE

CONNECTOR #B2A
ALUMINUM (TIN PLATED)

Schematic drawing covers:
B2A-PCB-45
B2A-PCB-45-HEX
B2A-PCB-45-SS

EXAMPLES OF TYPICAL SOLDER PADS



THIS DRAWING AND DESIGN ARE THE PROPERTY OF INTERNATIONAL HYDRAULICS, INC., CLEVELAND, OHIO, AND MAY NOT BE DUPLICATED, USED FOR THE BASIS OF DESIGN OR MANUFACTURE WITHOUT THE WRITTEN PERMISSION OF INTERNATIONAL HYDRAULICS, INC., CLEVELAND, OHIO.

GENERAL TOLERANCES ±.015 (±0.038)

MATERIAL: **SEE ABOVE**

FINISH:

INTERNATIONAL HYDRAULICS, INC.

TITLE: Connector + bus for PCB Mount
45deg. ASSEMBLED CONNECTOR

SIZE: DRAWN BY: TDS DWG NO.: "MULTI" SEE ABOVE REV: 1

DATE: 11/7/11
11/7/14

IHI CONNECTORS